



Fundación
Charles Darwin
Foundation
GALAPAGOS



Executive Summary-Annual Report 2017 and 2018 Preview

Table of Contents

Mission and Vision	3
Our team	4
Visiting scientists and collaborators	5
Executive Management	5
Marine projects	6
Land projects	7
Financial report	8
Collections	9
Inspirational stories	10
New project: Inspiration Complex	10
Library	11
Weather station	11
Conservation costs	12
Our 10 main donors	13
Institutional achievements	14 -15

Photos:

Cover: Joshua Vela

Sam Rowley, Tui De Roy, Paola Díaz, Daniel Unda, Macarena Parra, Joshua Vela, Salomé Buglass, Liza Díaz, Pelayo Salinas, Nicolás Moity, Julio Rodríguez, David Anchundia, Heinke Jäger, Juan Manuel García, Sophia Green, Daniela Vilema, Lennin Betancourt, Fabiola Alvarez, WHOI / MV ALUCIA, FCD Archive

Acronyms

Charles Darwin Research Station- CDRS
Charles Darwin Foundation- CDF
Galapagos National Park Directorate- GNPD
Galapagos Marine Reserve- GMR
Galapagos Marine Resources Reserve - GMRR
National Institute of Meteorology and Hydrology- INHAMHI
Quarantine and Inspection Program for Galapagos - SICGAL

Complete version of the Annual Report available at:
www.darwinfoundation.org



MISSION

The mission of the Charles Darwin Foundation and its Research Station is to provide knowledge and assistance through scientific research and complementary action to ensure the conservation of the environment and biodiversity in the Galapagos Archipelago.

VISION

The vision of the Charles Darwin Foundation and its Research Station is to contribute to a sustainable Galapagos by providing breakthrough research which informs conservation actions and inspires humanity to conserve this extraordinary Archipelago and our planet as a whole.

Our Team 2017/2018

Staff	107
Volunteers	110
TOTAL:	217



Staff

Local staff	54%
National staff	26%
International staff	20%



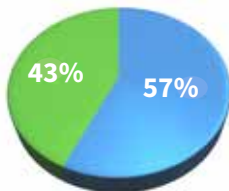
Volunteers

Local volunteer	26%
National volunteer	29%
International volunteer	45%

Area of activity

124 Scientists	● 57%
93 Administratives	● 43%

Staff	42
Volunteers	82
Staff	42
Volunteers	82



Scholars and Thesis

15 people

Local scholars	7
Ecuadorian thesis students	7
International thesis students	1

To learn more about our volunteer program visit our website

www.darwinfoundation.org
vol@fcdarwin.org.ec

Visiting scientists

Visiting scientists develop their own projects with a research permit issued by the Galapagos National Park Directorate (GNPD) and are not formally bound to CDF projects.

Collaborating scientists

Collaborating scientists carry out projects linked to CDF projects and are included in the Annual Operating Plan of the CDF. They develop their projects in coordination with their counterpart in the CDF. The counterpart is also responsible for reviewing the research proposals and other documents before they are submitted to the GNPD.



	VISITING SCIENTIST	COLLABORATING SCIENTIST
Germany	2	3
Saudi Arabia		1
Argentina		4
Australia		12
Austria		14
Belgium		3
Bulgaria	1	
Canada	1	6
Chile		1
Colombia	1	
Denmark		3
Ecuador	8	34
U.S	14	87
Spain		5
France	1	4
Holland		2
Israel		4
Italy		1
Japan	1	2
Mexico		2
Norway		1
New Zealand		13
Panama		4
Peru	1	
UK	4	18
South Africa		1

259

Visiting Scientist
and collaborating scientist

Researchers interested in developing a scientific project through the CDF can visit our website or contact cientificos@fcdarwin.org.ec

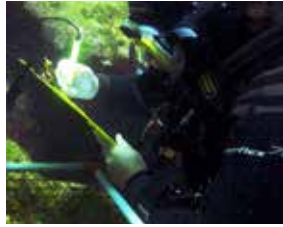
Research projects

During this period (July 2017 - July 2018), several research projects approved by the Galapagos National Park Directorate were developed.

20 projects



Study of the Status of Galapagos Penguin, Flightless Cormorant, and Galapagos Albatross Populations.



Research on Marine Invasive Species for Prevention, Detection, and Management in the Galapagos Marine Reserve (GMR).



Ecology, Evaluation and Management of Fisheries: Steps Towards Sustainability.



Sharks in the GMR: Evaluation of the status of Populations and Habitat Use, Connectivity, and Migration Routes.



Seamounts of the Galapagos Marine Reserve.



Reducing the Threat of Vessel Impact for the Green Turtle in the Galapagos Islands.



Subtidal Ecological Monitoring: Continuity of Subtidal Ecological Monitoring in the GMR.



Status of Birds' Biodiversity in the Coastal Marine Areas.



Galapagos Verde 2050: Ecological Restoration and Sustainable Agriculture.



Protection and Recovery of the Mangrove Finch *Camarhynchus heliobates*, a Bird in Danger of Extinction.



Control of the Introduced Fly *Philornis downsi* and its Impact on Biodiversity.



Conservation of Threatened Populations of Small Land Birds.



Restoration of the **Los Gemelos** Ecosystem Following the Current Impacts. Analysis of the Possibility to Biologically Control Blackberry.



Long-Term Evaluation of the Control of Quinine, *Cinchona pubescens*, and the Possibility of a Biological Control.



Analysis of Satellite Images and Drone Image Processing to Map The Expansion of Invasive Plant Species.



Ecology of Movement of Galapagos Tortoises.



Study of the Distribution and Trophic Management of the Introduced Frog *Scinax quinquefasciatus* in Santa Cruz, Galapagos.



Pilot Research to Reduce the Mortality of Birds on the Roads of Santa Cruz Island.



Study of the Status of the Galapagos Flamingo and Lagoon Birds Populations.

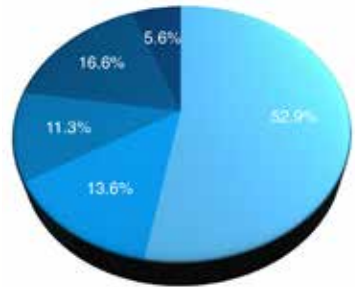


Implementation of Methods to Control the Invasive Wasp *Polistes versicolor* in the Galapagos Islands.

2017 FINANCIAL REPORT

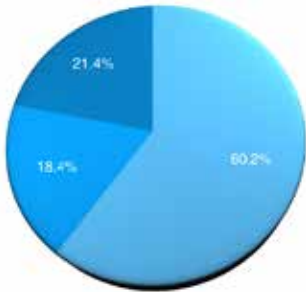
INCOME

Applied restricted income	\$ 2,455,902	52.9%
Unrestricted pledged income	\$ 630,000	13.6%
Unrestricted other income	\$ 523,065	11.3%
Institutional promotion	\$ 771,124	16.6%
Other income	\$ 258,621	5.6%
TOTAL	\$ 4,638,712	



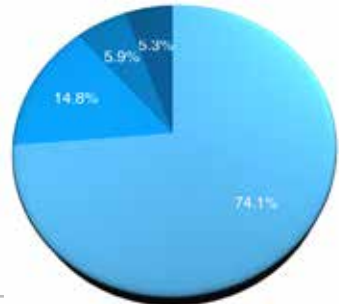
EXPENDITURE

Science, conservation & education*	\$ 2,764,859	60.2%
Fundraising	\$ 844,534	1.4%
Other expenditures	\$ 980,952	21.4%
TOTAL	\$ 4,590,345	



* Science, conservation & education

Costs of scientific projects	\$ 2,047,578	74.1%
Costs of other projects	\$ 408,324	14.8%
Services to scientists Laboratory and collections	\$ 161,903	5.9%
	\$ 147,054	5.3%
TOTAL	\$ 2,764,859	



STATEMENT OF FINANCIAL POSITION

Assets

	31-12-2017	31-12-2016
Cash/cash equivalents	\$ 2,667,969	\$ 1,803,436
Other current assets	\$ 508,928	\$ 467,813
Non-current assets	\$ 1,228,162	\$ 1,234,229
TOTAL	\$4,405,059	\$3,505,478

Liabilities and equity

Deferred income	\$ 2,204,988	\$ 1,431,868
Other current liabilities	\$ 428,440	\$ 348,306
Employee benefits	\$ 431,291	\$ 433,241
Equity	\$1,340,340	\$1,292,063
TOTAL	\$4,405,059	\$3,505,478



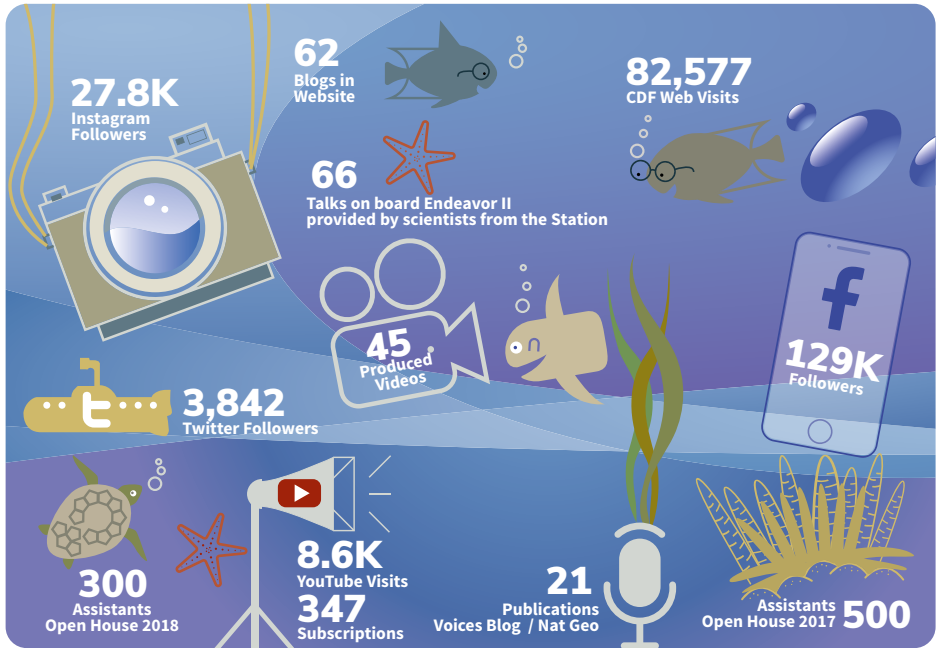
Collections:

The Charles Darwin Foundation is the custodian of four Natural History Collections: The Herbarium (CDS), Terrestrial Invertebrates (ICCDRS), Marine Invertebrates (MCCDRS) and Vertebrates (VCCDRS). These repositories of biological diversity constitute the largest sample of endemic, native, and exotic species of Galápagos in the world.

Specimens

	Records	Identified	Specimens	Incoming 2018
Herbarium	44,658	37,380	2,586	388
Terrestrial Invertebrates	35,428	24,722	834	279
Vertebrates	2,663	2,440	209	2
Marine invertebrates	7,218	4,180	781	1,317
Total	89,967	68,722	4,410	1,986

Sharing Inspiring Stories



New Project: Inspiration Complex



The Inspiration Complex combines the old dining room of the CDRS—a site that, for decades, provided a space for social and scientific interaction to several generations of researchers—and the former BIOMAR and warehouses for visiting scientists. With this project, CDF hopes to reinforce this space with a Regional Marine Research Center, laboratories, offices, quarantine facilities, warehouses, study rooms, and a dynamic conference room.

Library

The Corley Smith Library of the Charles Darwin Foundation is the main bibliographic repository of the Scientific Station in Galapagos, and it also manages the archival materials.



23

publicaciones

3

Informes técnicos

Number of Books Purchased

In 2018, the library purchased

90 new titles for its scientific collection, investing a total of:

7,600 dollars.

Number of Books by Area

We currently have:

7,000

volumes in the General Collection

4,000

volumes in the Galapagos Special Collection

Weather Station

The Weather Station is intended to measure and regularly record various meteorological variables. These data are used both to prepare weather predictions from numerical models and for climate studies.

Meteorological data obtained:

1. Maximum temperature
2. Minimum temperature
3. Humid temperature
4. Dry temperature
5. Precipitation
6. Sunshine duration
7. Sea temperature

This data set of **7** components is taken three times a day, 365 days a year. We have a total of:

7,665 Meteorological quantities collected

Between July 2017 – July 2018.

We have given INAMHI:

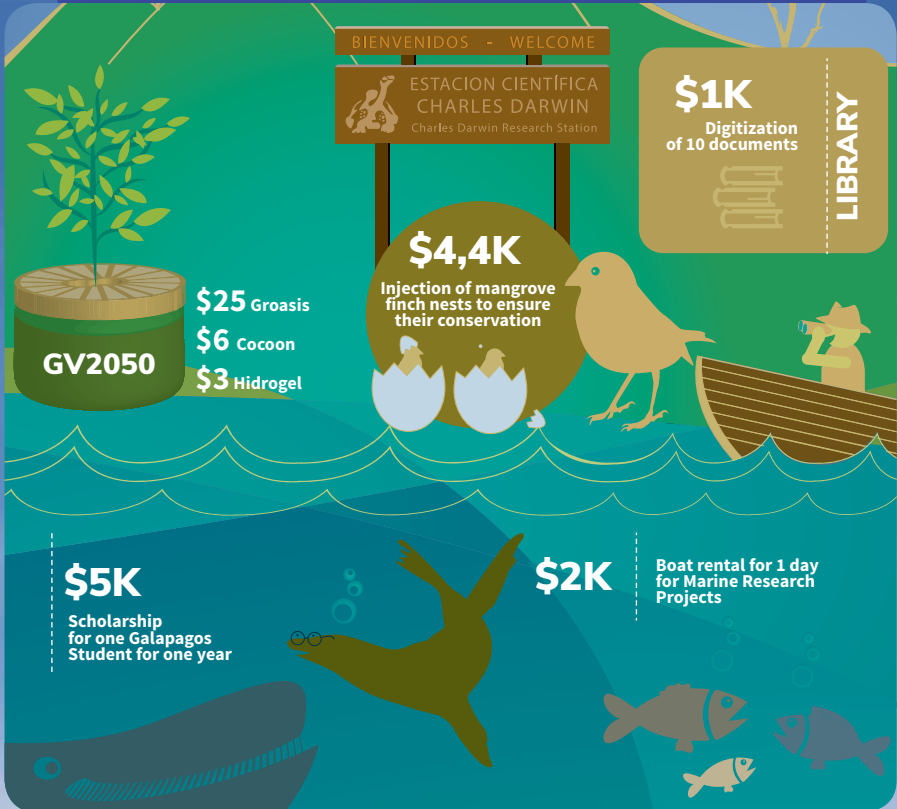
12 Report cards cards per year

365 measurements of direct solar radiation

Soon available online on the Station's website



Conservation Costs



PLEASE DONATE!

You can donate by visiting our Website:

<https://www.darwinfoundation.org/en/donate>

Other Ways to Give to CDF

The Charles Darwin Foundation also receives donations by check, direct transfer, planned donations, and donations of stocks. If you would like to donate using one of these methods, please contact our Fundraising Team at:

fundraising@fcdarwin.org.ec

If you live in the United States, you can make your mark in Galapagos and consider the Charles Darwin Foundation when planning your estate inheritance. For more information about leaving your legacy, please contact:

fundraising@fcdarwin.org.ec

Our Major Donors January 2017 to June 2018

Institutions and Corporations

1. The CoMOn Foundation
2. The Helmsley Charitable Trust
3. Galapagos Conservancy
4. International Watch Company Schaffhausen
5. Lindblad Expeditions – National Geographic Fund
6. Ecoventura
7. Save our Seas Foundation
8. United Nations Environment Programme
9. Paul M. Angell Family Foundation
10. Galapagos Conservation Trust

Individuals

1. Ms. Karen Lo
2. Amy E. Blackwell
3. Ken Collins and Jennifer Mallinson
4. Brian Graham Tennant (legacy)
5. Sven Lindblad
6. Mark Wang
7. Barbara West
8. Seishi Sakamoto
9. Darrel Schoeling and Jeff Corbin
10. Dennis Geist

Thank you for your support!



Institutional Achievements



1959

The Charles Darwin Foundation (CDF) for the Galapagos Island was created, and the Galapagos National Park (PNG) was established.



1963

The first edition of CDF's Galapagos Research was published.



1964

The Charles Darwin Research Station (CDRS) was inaugurated in Puerto Ayora, Santa Cruz Island. 25-year Agreement with the Ecuadorian state was signed.



1965

The Program to Breed in Captivity and Repatriate Giant Tortoises began on Santa Cruz Island.



1966

The first Education for Conservation of the Galapagos Islands Program began.



1982

Conservation Program in Floreana for the Pata Pegada (*Pterodroma phaeopygia*) started.



1986

Galapagos Marine Resources Reserve (GMRR) was established and the First Operational Plan of the CDRS was produced.



1989

Multiple Use Building of CDRS was opened in San Cristobal. 25-year Agreement with the Government of Ecuador was renewed.



1992

The Management Plan of the GMRR was approved and the CDRS Master Plan was launched.



1995

CDF rediscovered the tree *Scalesia atractyloides* and the Floreana Flax (*Linum cratericola*), believed to be extinct, in collaboration with the GNPD.



2009

Charles Darwin Foundation 50th anniversary.



2010

Knowledge Management information repository project started.



2012

CDF launched the DataZone virtual platform. Efforts began to discover and evaluate mechanisms to control the invasive fly (*Philornis downsi*).



2014

The first Mangrove Finch was born in the CDRS as part of the Captive Breeding Program for endangered species.



2016

CDF scientific research supported the declaration of the Darwin and Wolf Marine Sanctuary. The Charles Darwin Exhibition Hall was inaugurated.



1971

Along with the GNP, CDF discovered Lonesome George, the last known survivor of the giant tortoises from Santa Cruz (Chelonoidis abingdonii).



1972

CDF Scholarships and Volunteers Program started for Ecuadorian students.



1973

Galapagos National Park Management Plan was launched with technical advice from CDF.



1976

First CDF annual report was launched. Van Straelen building was opened.



1978

First CDF annual report was launched. Van Straelen building was opened.



1997

Isabela Project begun, eliminating goats and pigs in the north of Isabela and in the Santiago and Santa Cruz Islands. The endemic rodent of Santa Cruz island (*Nesoryzomys swarthi*) that was believed extinct was rediscovered.



1998

With the approval of the Special Law for Galapagos (LOREG), the Galapagos Marine Reserve (GMR) was created.



2000

The data base for the Natural History Collections and the Terrestrial Invertebrates Collection was created. The Galapagos Quarantine and Inspection Program (SICGAL) began, to prevent the introduction of invasive species into the Archipelago.



2002

After several years of studies about potential biological controls, the Australian ladybug (*Rodolia cardinalis*) was released to control invasive cottony cushion scale (*Icerya purchasi*).



2007

The Charles Darwin Foundation issued the report, 'Galapagos at Risk'.



2017

The National Assembly of Ecuador ratified the cooperation agreement with the Ecuadorian Government to operate the CDRS in Galapagos for the next 25 years.



2018

"Marine World" exhibit was inaugurated at the Van Straelen Interpretation Center. The first Atlas of Galapagos was launched co-authored with WWF-Ecuador.



fundación
Charles Darwin
foundation

GALÁPAGOS - ECUADOR

2019

60th Anniversary of the Charles Darwin Foundation.



Fundación
Charles Darwin
Foundation

G A L A P A G O S

CHARLES DARWIN FOUNDATION FOR THE GALAPAGOS ISLANDS

📍 Puerto Ayora, Santa Cruz, Galápagos, Ecuador.

+593 (5) 2526 146 / www.darwinfoundation.org / cdrs@fcdarwin.org.ec

The "Charles Darwin Foundation for the Galapagos Islands". In French "Fondation Charles Darwin pour les îles Galapagos", Association Internationale sans but lucratif, has its registered office located at Drève du Prieuré 19, 1160 Brussels, and is registered under the trade registry of Brussels under the number 0409.359.103, (the "AISBL").